



APIKOL B4/B5 REAR DIFFERENTIAL MOUNT INSTALLATION INSTRUCTIONS

Only work underneath your vehicle after properly supporting it with adequate jack stands on a flat surface. **NEVER work under a vehicle only supported with a jack.**

Estimated Installation Time: Approximately 15-30 min

Required Tools: T50 and T45 Torx drivers, 8mm Hex driver

To Remove the Rear Differential Mount:

- 1) Safely support your vehicle on jackstands. Support the long nose of the differential with an additional stand. A large aluminum brace (Figure 3) acts as part of the mounting system for the rear differential and also is one of the center muffler exhaust hanger mounting points. This brace is held in with 4 Torx bolts – 2 long bolts (T50) on the passenger side (Figure 1) and 2 short bolts (T45) on the driver side (Figure 2). These 4 bolts need to be removed (Figure 3). Remove the aluminum brace from the vehicle. Note: It may be necessary to remove the rear exhaust hangers to allow the exhaust system to hang lower to gain access to one of the mounting bolts and to remove the aluminum brace. This only applies to some vehicles with aftermarket exhaust systems; generally cars fitted a dual exhaust.

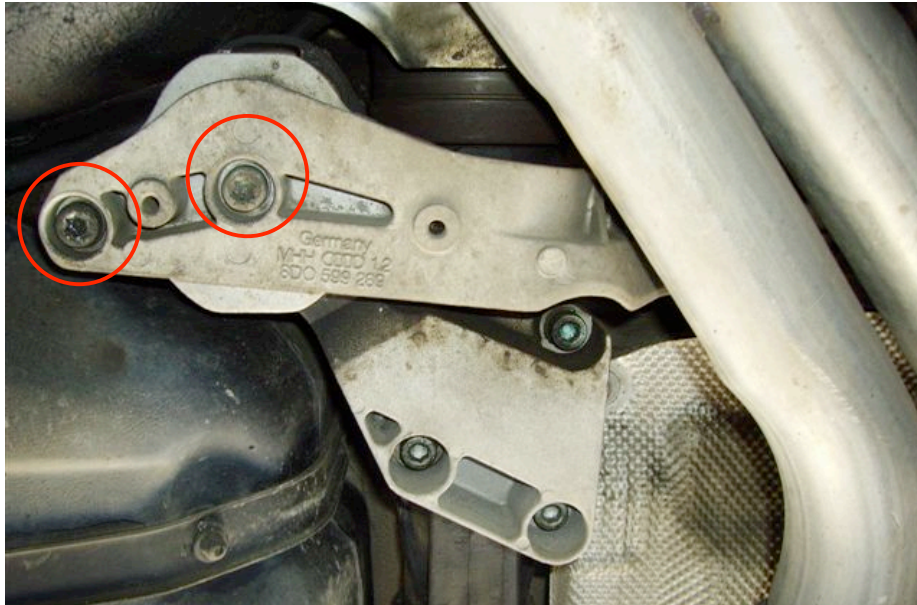


Figure 1

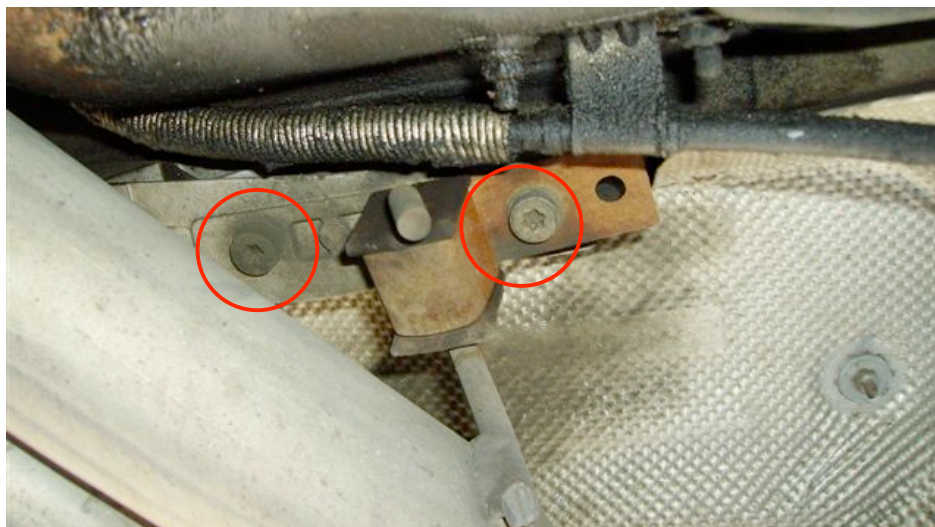


Figure 2

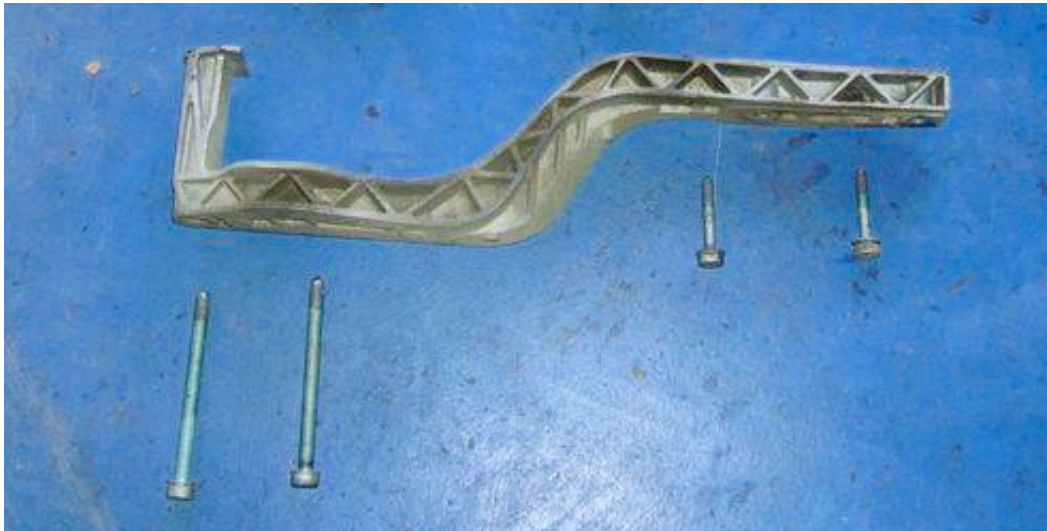


Figure 3

- 2) Remove the old differential mount by removing the 4 hex head allen bolts (8mm drive) – Figure 4.

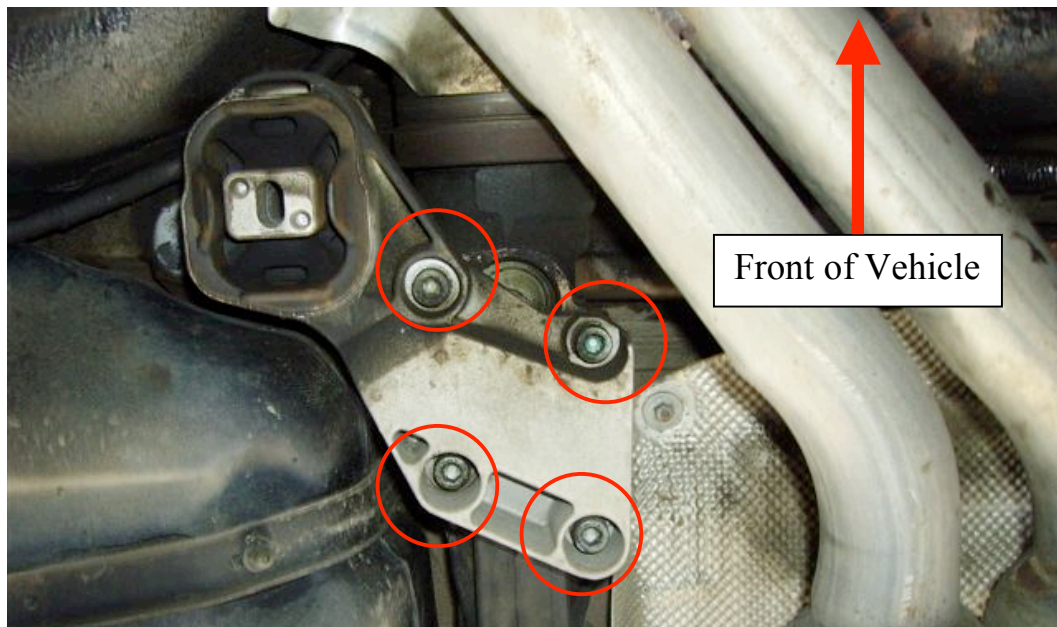


Figure 4

- 3) Clean the surface on the differential housing where the Apikol diff mount will be installed – as depicted in Figure 5. Also clean the surface of the aluminum cross brace (Figure 3) and the area of the chassis that will contact the differential mount.



Figure 5

- 3) Install the Apikol rear differential mount as depicted in Figure 6. Torque the 4 8mm drive hex bolts to 30 lb-ft.

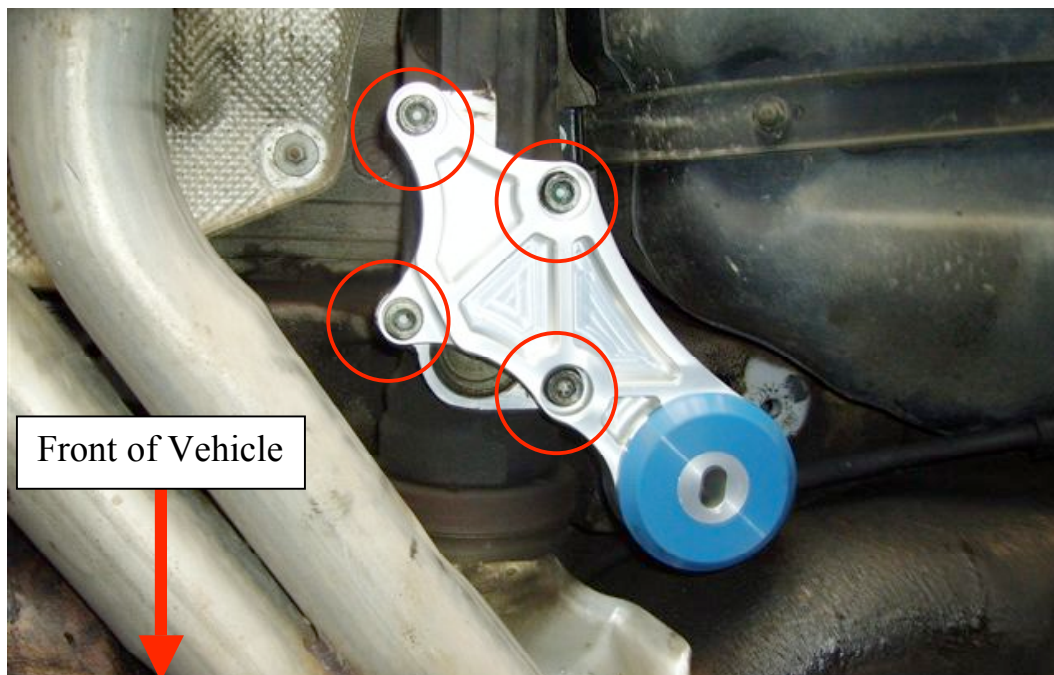


Figure 6

4) Reinstall the factory aluminum cross brace. Torque the T45 to 17 lb-ft and torque the T50 to 30 lb-ft. See Figure 7.



Figure 7

Enjoy your Apikol Differential Mount!!