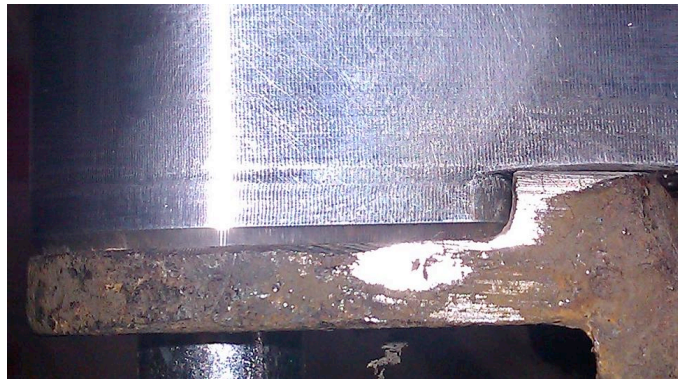


UrS4/S6 Rear Swaybar Bracket Revision Sheet:

This install sheet addendum is intended to produce the best possible interface between the newly revised Apikol UrS4/S6 Sway Bar Brackets and the shock mount casting.

Step 1: Grind the shock mount casting until the Apikol sway bar bracket sits flush with the casting. Clean any debris or rust from the "notch" in the casting.



Step 2: Install the provided socket-head bolt thru the Apikol Sway bar bracket and the shock mount casting. Rotate the Apikol bracket downward to engage the locking tank against the shock mount. Center-punch for the M8x1.25 screw in this position, then drill/tap the casting.

